

OPEN THE DOOR TO EASY.

## SLAB MEASUREMENT FORM (Circle all requirements on order)

APARTMENT COMPLEX:

P.O.#:  UNIT #:  UNIT TYPE (2 BR, etc.):

COLOR: (Circle One): SNOW MATTE PLATINUM TEAK URBAN TEAK MOCHA TEAK

DOOR STYLE: SLAB HARDWARE COLOR: (Circle One): SATIN NICKEL DARK BRONZE (NO BAR PULL)

CABINET CONSTRUCTION (Circle One): FRAMED FRAMELESS (verify sidewall thickness of 5/8" or 3/4", 5/8" is standard)

HARDWARE STYLE: (Circle One): SQUARE PULL SQUARE KNOB BAR PULL TAPERED ARCH PULL ROUND KNOB T-SHAPED KNOB (SATIN ONLY)

HINGE OVERLAY (Circle One): 1/2" 3/4" 1" 1-1/4"

HINGE TYPE (Circle One): LUXURY SOFT CLOSE (add \$0.80/hinge. Not for frameless cabinets) HIDDEN HINGE (standard)

ORDER DATE:

/ /

REQUEST TYPE:

ORDER

QUOTE

LINE ITEM	LABEL NOTES	PART TYPE <small>(Door, Drawer Front, False Front, Hamper Front, or Tilt Out)</small>	WIDTH	HEIGHT	HINGE LOCATION <small>(L   R side)</small>	CABINET LOCATION <small>(Up   Low)</small>	QUANTITY	OTHER NOTES <small>(Color is more than one circled above. Special hinges or pulls.)</small>
1.								
2.								
3.								
4.								
5.								
6.								
7.								
8.								
9.								
10.								
11.								
12.								
13.								
14.								
15.								
16.								
17.								
18.								
19.								
20.								
21.								
22.								
23.								
24.								
25.								

### DOUBLE CHECKS

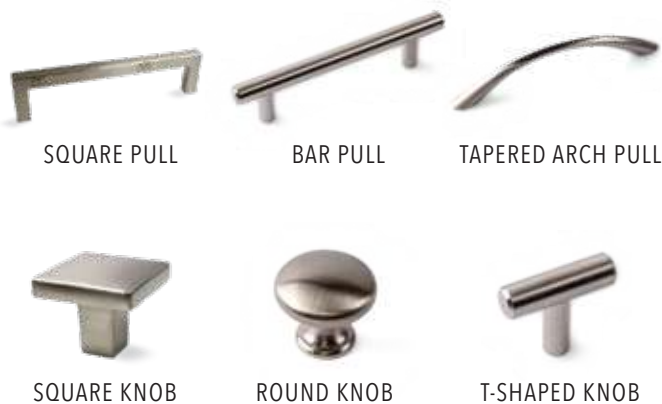
- NUMBER OF PARTS IN THE UNIT EQUALS THE NUMBER OF PARTS ORDERED
- MEASUREMENTS MAKE SENSE

CUSTOMER PHONE NUMBER (For Measurement Questions): \_\_\_\_\_

## 1. COLORS



## 3. HARDWARE CHOICES



## 5. PART TYPES

- **Door:** Drilled for hinges on side. *Included in suggested pull count.*
- **Drawer Front:** Drilled for pulls, if pulls purchased from Cinch. *- Included in suggested pull count.*
- **False Front:** Mounting kit will be suggested. No pull suggested.
- **Decorative Panel:** Vertical grain. No hinges or pulls suggested.
- **Hamper Front:** Drilled for hinges on bottom. *- Included in suggested pull count.*

## 4. HINGE OVERLAY

Hinge overlay is the amount that a cabinet door covers the wooden frame on the front of a cabinet.

$$\frac{(\text{Door Width}) - (\text{Cabinet Opening Width})}{2} = \text{Hinge Overlay}$$

### 1/2" OVERLAY DOOR EXAMPLE

